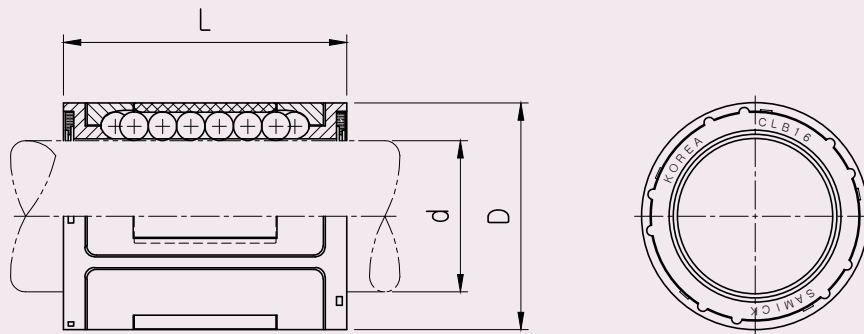


Self-Aligning Linear Bushing

**CLB** Compact Linear Bushing

● Drawing



● Part Number Notation

**CLB 20 UU - N S**

- Compact Linear Bushing
- Nominal Shaft Diameter
- Seal

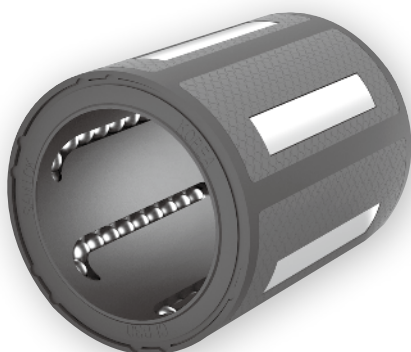
Blank	No Seal
UU	Both Side Seal
U	One Side Seal

- Corrosion resistance type

Blank	No-plating(Standard)
N	Electroless nickel plating
C	Chrome plating

- Ball type (material)

Blank	High carbon bearing steel ball(Standard)
S	Stainless steel ball



## Self-Aligning Linear Bushing

**CLB Compact Linear Bushing**

Shaft Diameter d(mm)	Part Number		No. OF BALL CIRCUIT	DIMENSION		WORKINGBORE DIAMETER		BASIC LOAD RATING(N) <sup>*2</sup>		WEIGHT (gf)
	Without Seal	With Seal		D <sup>*1</sup> (mm)	L(mm) ±0.2	dr(mm)	CLEARANCE(μm)	DYNAMIC (C)	STATIC (Co)	
8	CLB8	CLB8UU	4	15	24	8	+9 -1	350	260	6.29g
10	CLB10	CLB10UU	4	17	26	10	+9 -1	416	320	7.65g
12	CLB12	CLB12UU	4	19	28	12	+9 -1	480	385	13.20g
14	CLB14	CLB14UU	5	21	28	14	+9 -1	640	440	15.00g
16	CLB16	CLB16UU	5	24	30	16	+9 -1	925	625	21.44g
20	CLB20	CLB20UU	6	28	30	20	+9 -1	1165	790	26.10g
25	CLB25	CLB25UU	6	35	40	25	+11 -1	2100	1370	57.20g
30	CLB30	CLB30UU	6	40	50	30	+11 -1	2870	2100	80.42g
40	CLB40	CLB40UU	7	52	60	40	+13 -2	5200	4100	143.30g
50	CLB50	CLB50UU	8	62	70	50	+13 -2	6620	5600	197.85g

★1 Based on nominal housing bore

★2 Dynamic load rating is based on the nominal life of 50km. In case of 100km, C on the table need to be divided by 1.26

Ex) 50km basis dynamic load rating of CLB12 C = 480N

100km basis dynamic load rating of CLB12 C<sub>100</sub> = 480 / 1.26 = 380.95N

★3 Main unit : mm

★4 1N= 0.102kgf

★5 The dimensions are in accordance with ISO 10285 series 1.

★6 Recommended housing bore tolerance : H7

Recommended Shaft diameter tolerance : h6